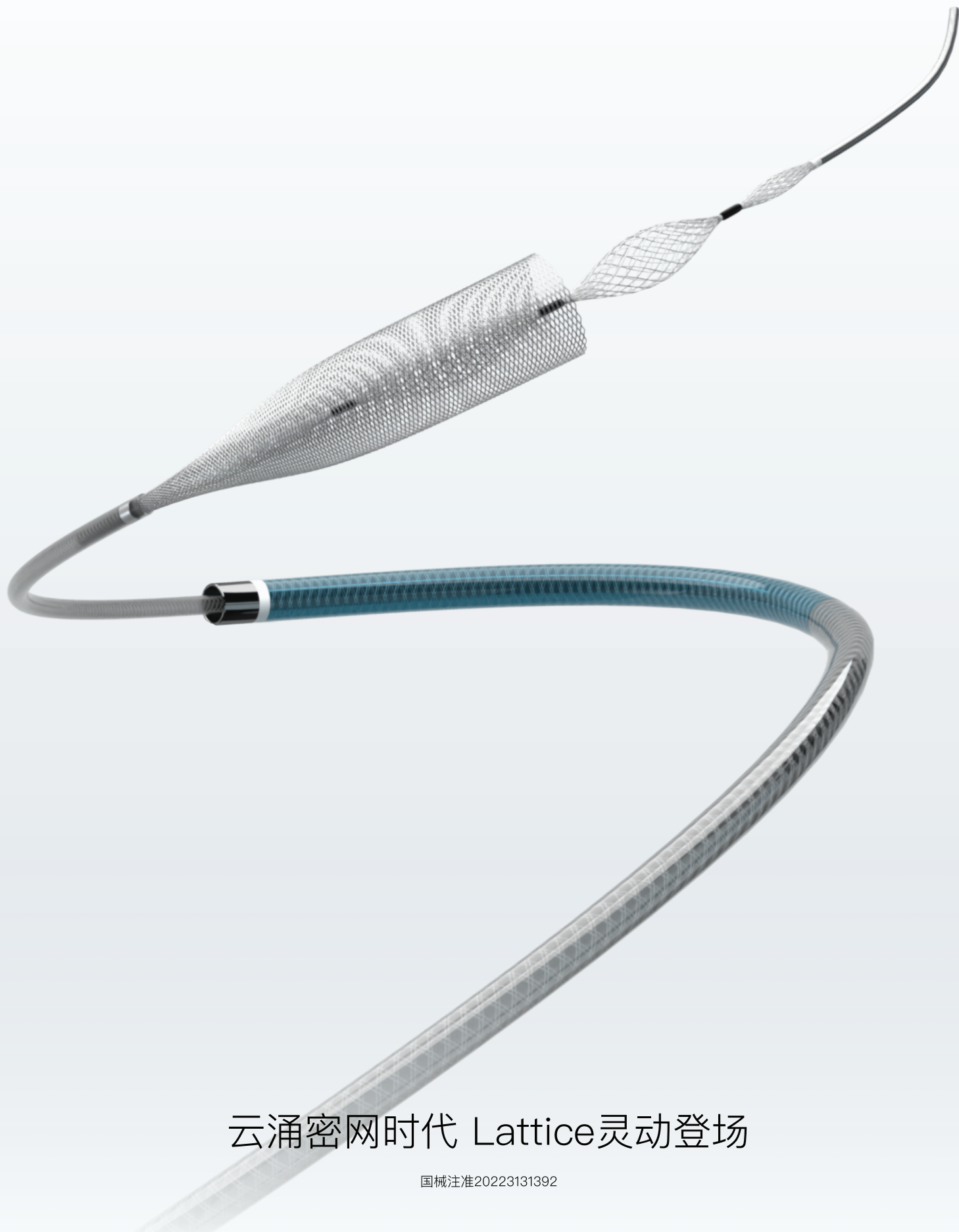


Lattice™

艾柯医疗
ACCUMEDICAL

血流导向密网支架



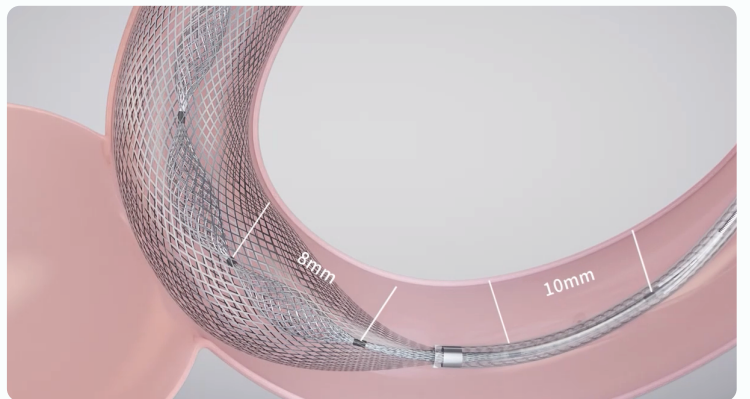
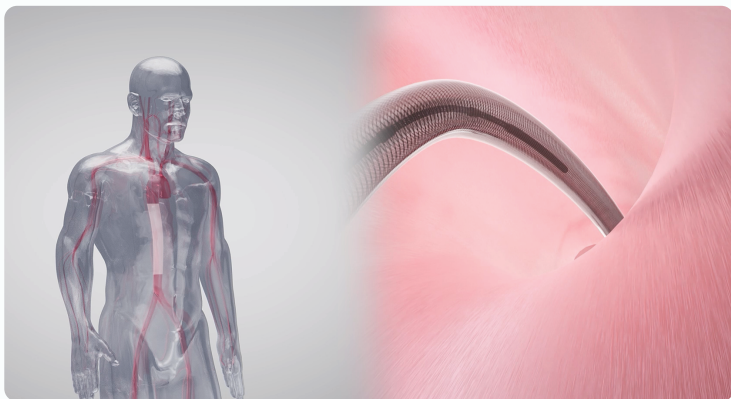
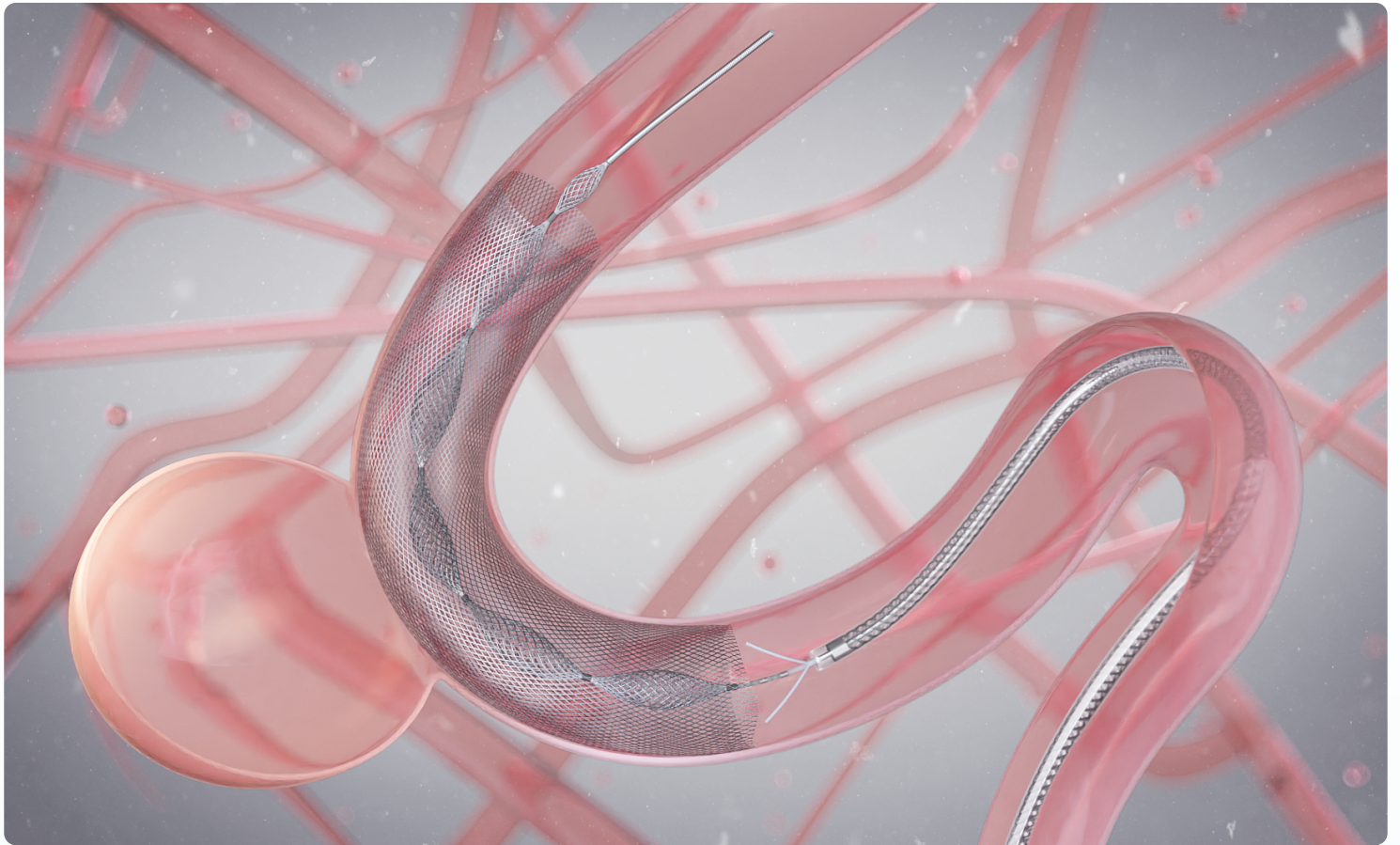
云涌密网时代 Lattice灵动登场

国械注准20223131392

Lattice的Football

Football, 简称FB, 代表机械球囊。

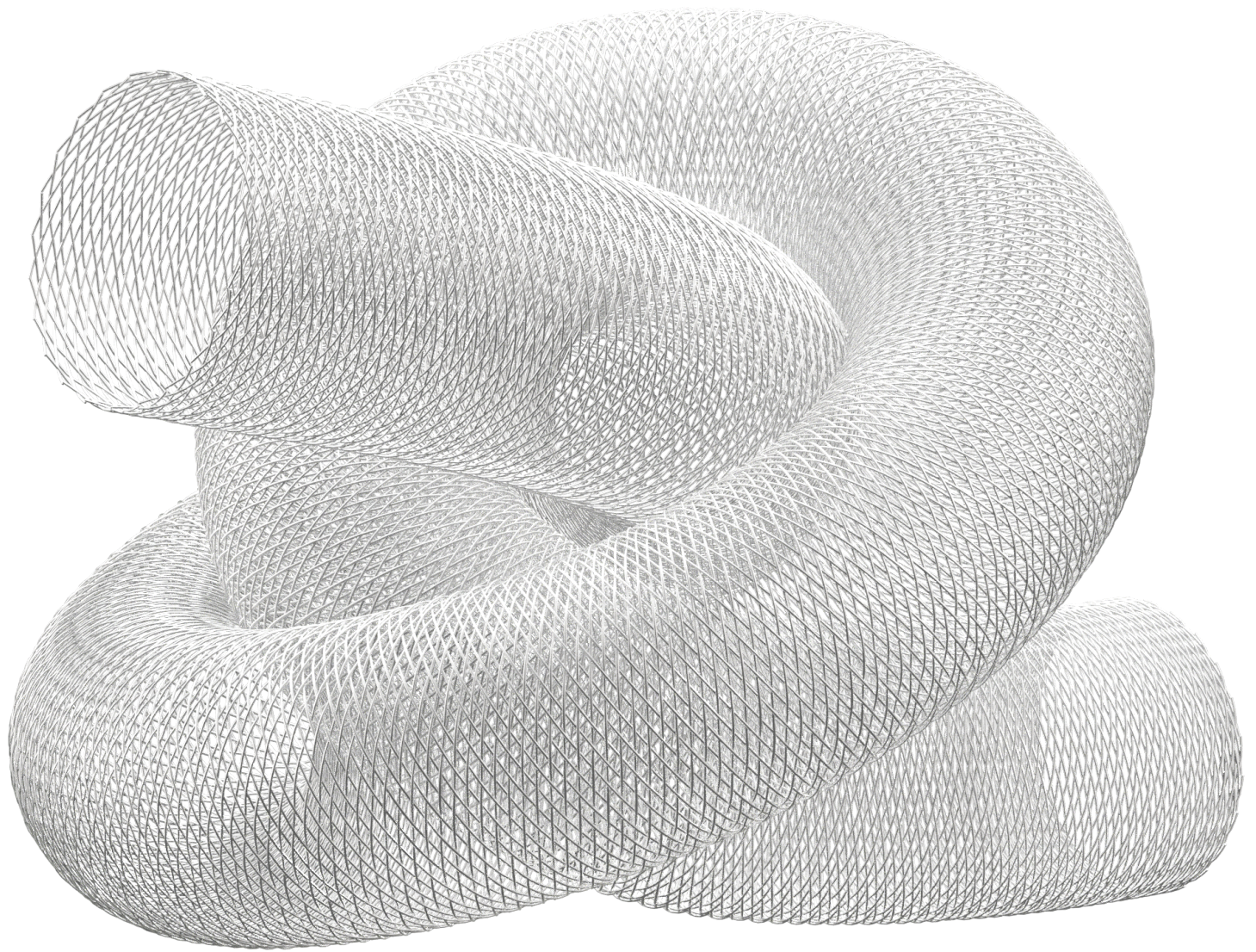
Lattice采用机械球囊输送支架，从支架内部进行辅助膨胀，实现原位释放不扭结、导丝稳定不位移



Lattice的Lattice

Lattice，意为网格，代表支架体。

Lattice支架体采用钴铬合金材质，在机械球囊的辅助膨胀配合下，径向力足、贴壁性佳



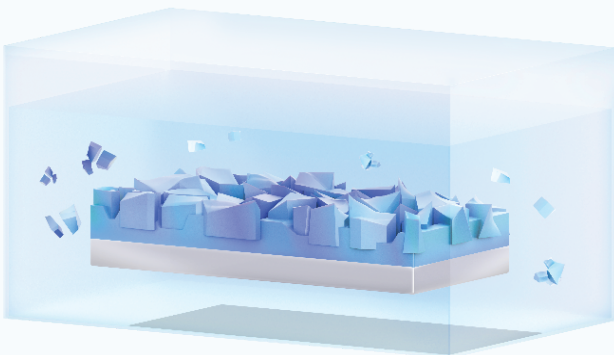
- 36根钴铬合金丝+12根铂钨显影丝
- 网孔密度20-35/mm²

- 金属覆盖率30-40%
- 支架体厚度50微米

Lattice的MIROR

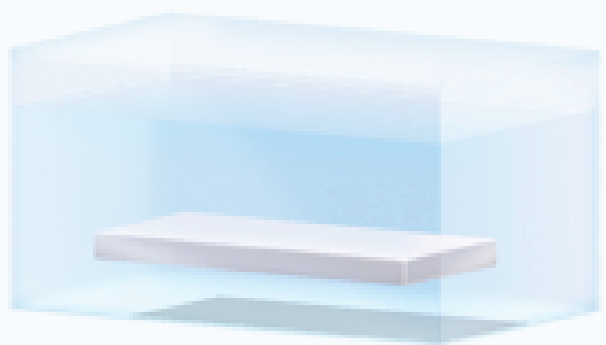
MIROR, 意为金属界面改性用于优化支架内狭窄

(Metal Interface Reassembly for Optimizing Restenosis)



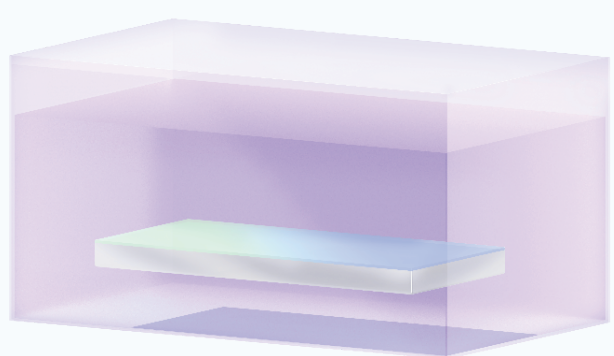
01

Lattice支架体和机械球囊均采用MIROR表面改性技术处理，减少致栓性、均匀内皮化



02

- 去除不稳定的氧化层
- 减少血小板凝集，降低致栓性
- LIFE试验中，缺血性事件发生率为0.78%



03

- 约2nm自组装层，提供光滑的脚手架
- 减少支架表面凹凸不平导致的内皮增生
- LIFE试验中，支架内狭窄发生率为0.78%

参数配置

国械注准20223131392

序号	产品型号	标称直径(mm)	标称长度(mm)	序号	产品型号	标称直径(mm)	标称长度(mm)
1	AF2301FB	2.3	13	45	AF4104FB	4.1	25
2	AF2302FB	2.3	20	46	AF4105FB	4.1	30
3	AF2303FB	2.3	27	47	AF4106FB	4.1	35
4	AF2304FB	2.3	33	48	AF4107FB	4.1	40
5	AF2601FB	2.6	12	49	AF4108FB	4.1	45
6	AF2602FB	2.6	18	50	AF4402FB	4.4	13
7	AF2603FB	2.6	25	51	AF4403FB	4.4	15
8	AF2604FB	2.6	31	52	AF4404FB	4.4	20
9	AF2605FB	2.6	38	53	AF4405FB	4.4	25
10	AF2606FB	2.6	45	54	AF4406FB	4.4	30
11	AF2901FB	2.9	11	55	AF4407FB	4.4	35
12	AF2902FB	2.9	15	56	AF4408FB	4.4	40
13	AF2903FB	2.9	20	57	AF4702FB	4.7	13
14	AF2904FB	2.9	25	58	AF4703FB	4.7	15
15	AF2905FB	2.9	30	59	AF4704FB	4.7	20
16	AF2906FB	2.9	35	60	AF4705FB	4.7	25
17	AF2907FB	2.9	40	61	AF4706FB	4.7	30
18	AF2908FB	2.9	45	62	AF4707FB	4.7	35
19	AF2909FB	2.9	50	63	AF4708FB	4.7	40
20	AF3201FB	3.2	11	64	AF4709FB	4.7	45
21	AF3202FB	3.2	15	65	AF5002FB	5.0	13
22	AF3203FB	3.2	20	66	AF5003FB	5.0	18
23	AF3204FB	3.2	25	67	AF5004FB	5.0	22
24	AF3205FB	3.2	30	68	AF5005FB	5.0	26
25	AF3206FB	3.2	35	69	AF5006FB	5.0	29
26	AF3207FB	3.2	40	70	AF5007FB	5.0	33
27	AF3208FB	3.2	45	71	AF5008FB	5.0	37
28	AF3209FB	3.2	50	72	AF5009FB	5.0	41
29	AF3502FB	3.5	15	73	AF5302FB	5.3	13
30	AF3503FB	3.5	20	74	AF5303FB	5.3	18
31	AF3504FB	3.5	25	75	AF5304FB	5.3	22
32	AF3505FB	3.5	30	76	AF5305FB	5.3	26
33	AF3506FB	3.5	35	77	AF5306FB	5.3	29
34	AF3507FB	3.5	40	78	AF5307FB	5.3	33
35	AF3508FB	3.5	45	79	AF5308FB	5.3	37
36	AF3802FB	3.8	15	80	AF5309FB	5.3	41
37	AF3803FB	3.8	20	81	AF5604FB	5.6	20
38	AF3804FB	3.8	25	82	AF5605FB	5.6	23
39	AF3805FB	3.8	30	83	AF5606FB	5.6	27
40	AF3806FB	3.8	35	84	AF5607FB	5.6	30
41	AF3807FB	3.8	40	85	AF5608FB	5.6	33
42	AF3808FB	3.8	45	86	AF5609FB	5.6	36
43	AF4102FB	4.1	15	87	AF5610FB	5.6	39
44	AF4103FB	4.1	20				

艾柯医疗器械（北京）股份有限公司
北京市朝阳区东三环工人体育场北路甲2号盈科中心A栋1210



www.accumedical.com
+86 010 6506 5018
