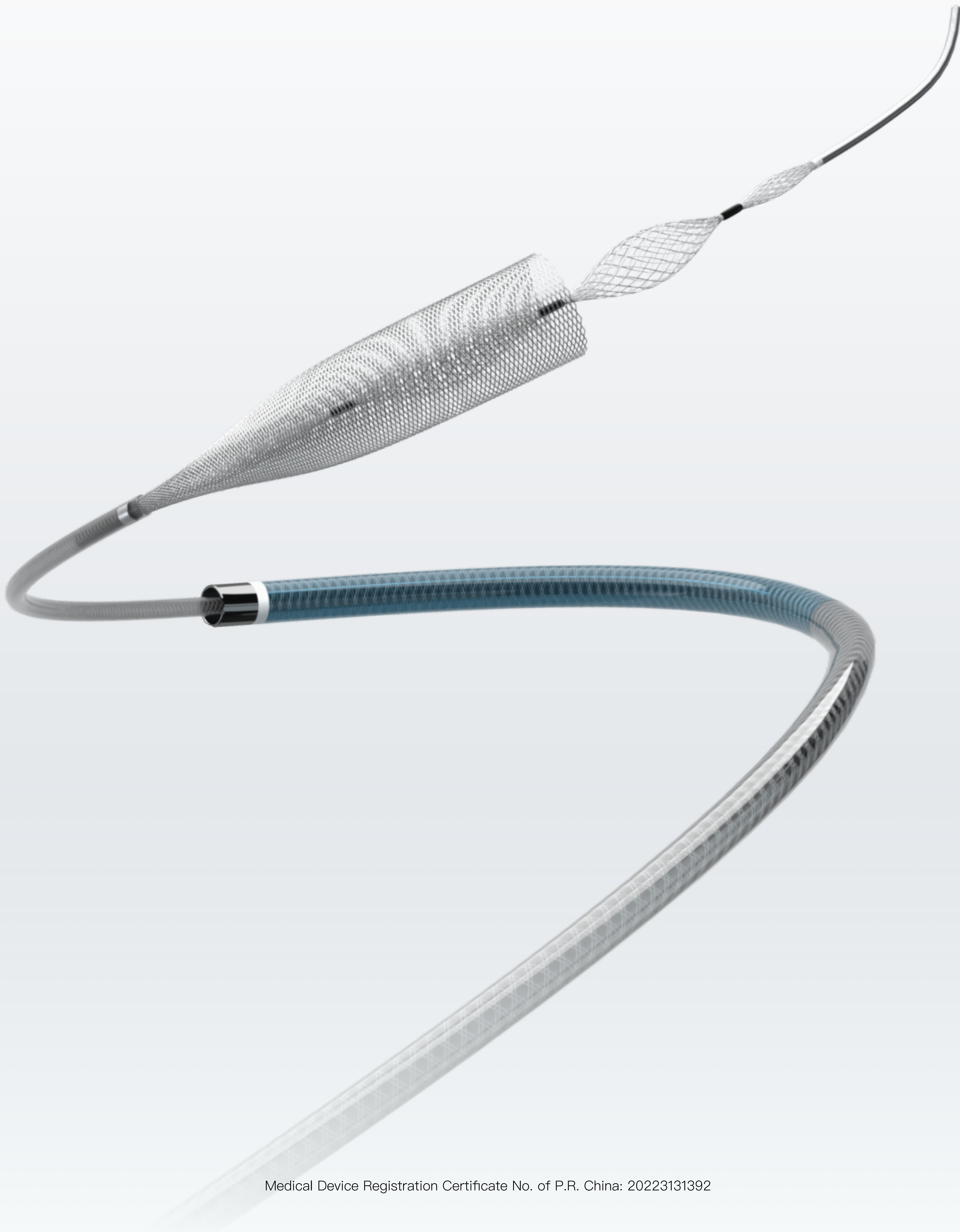


# Lattice<sup>®</sup>

艾柯医疗  
ACCUMEDICAL

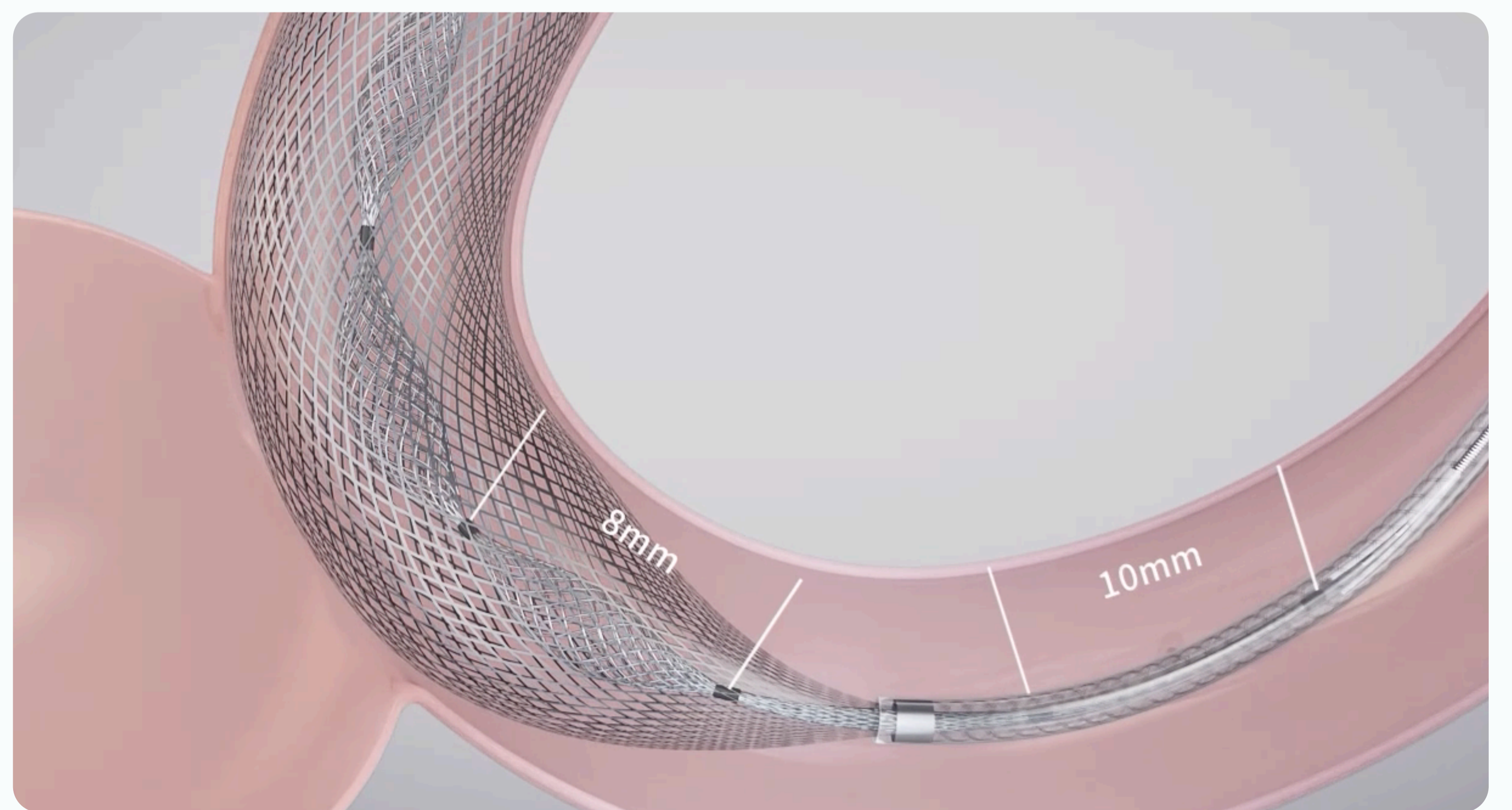
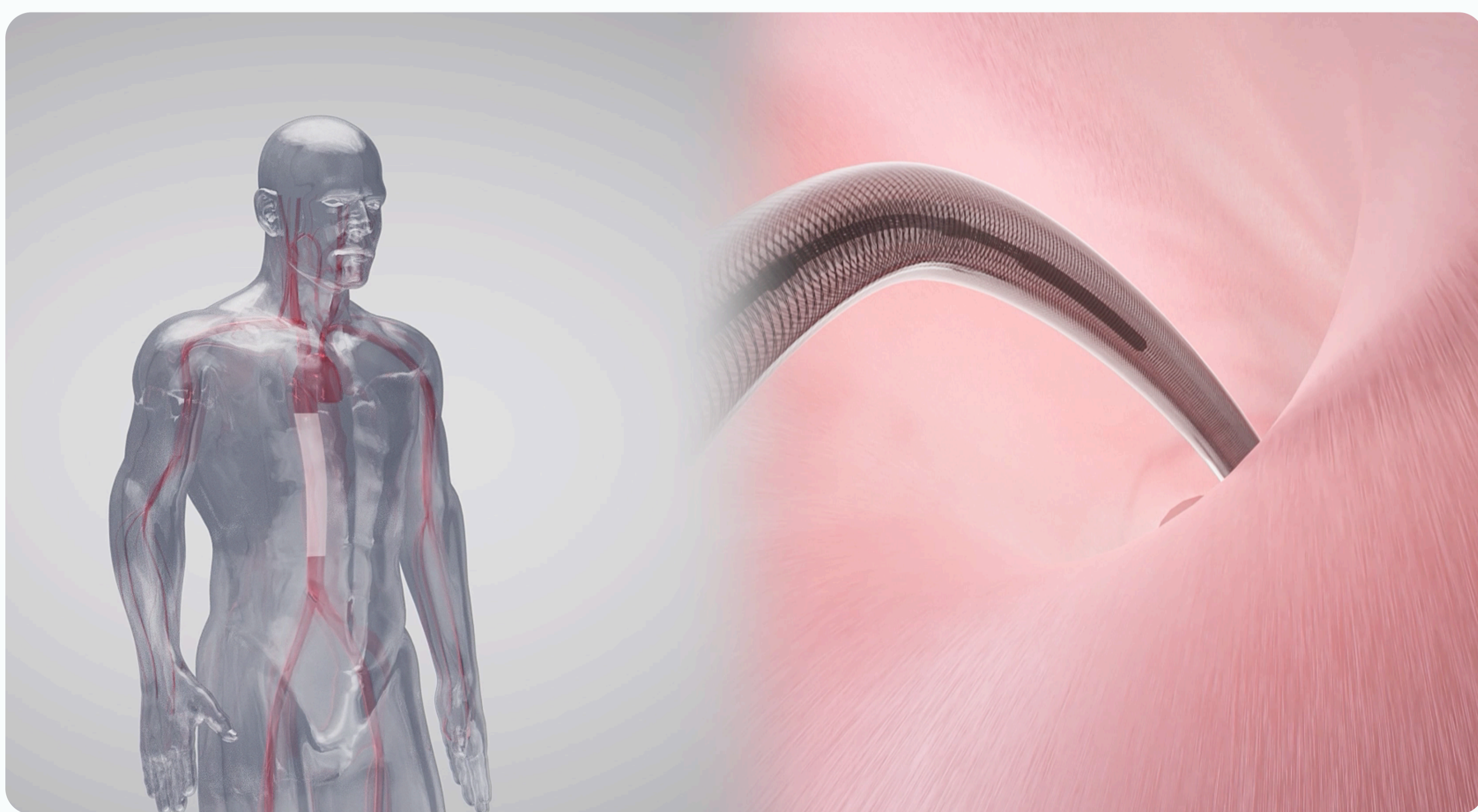
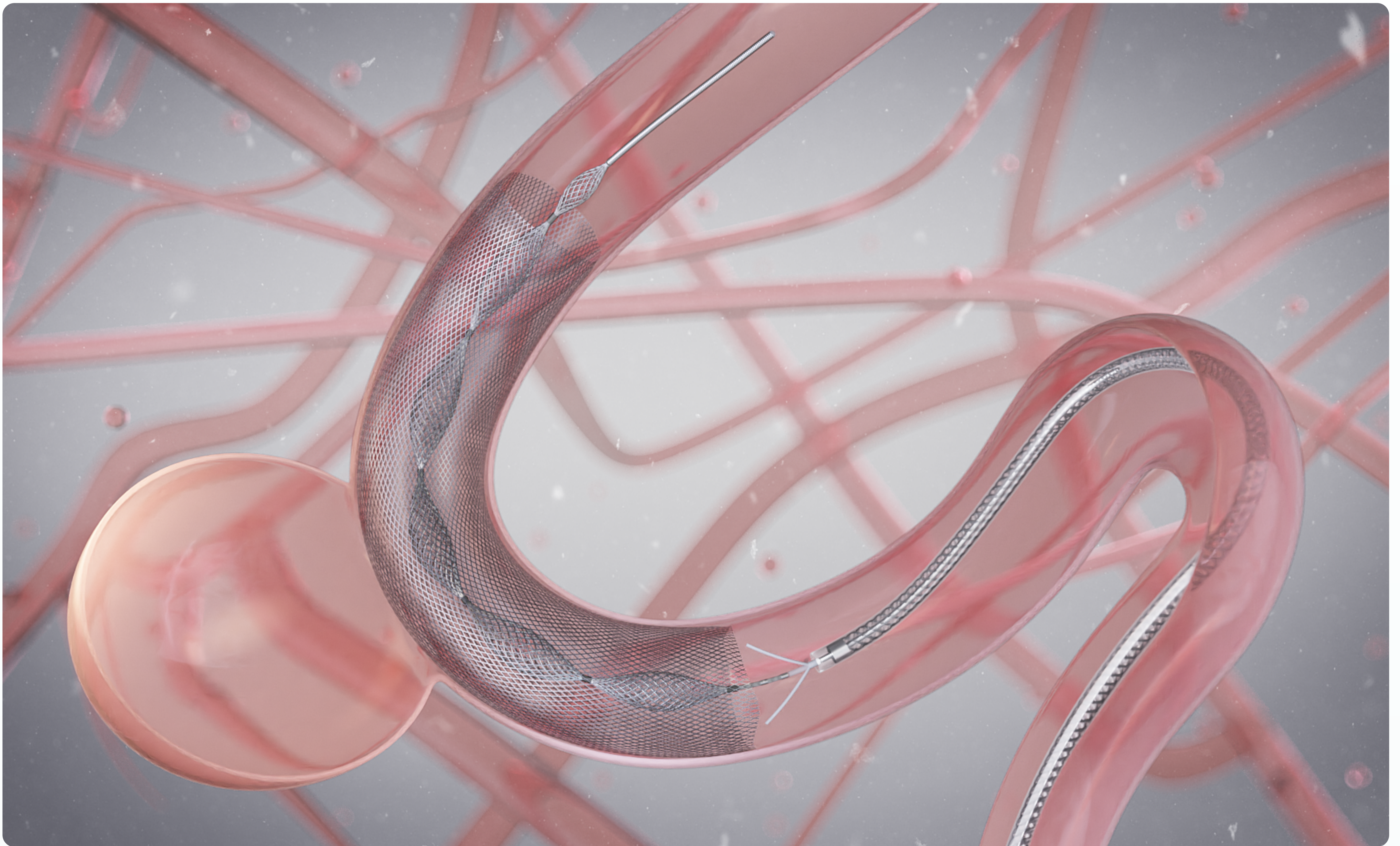
Flow Diverter





# Mechanical Balloons

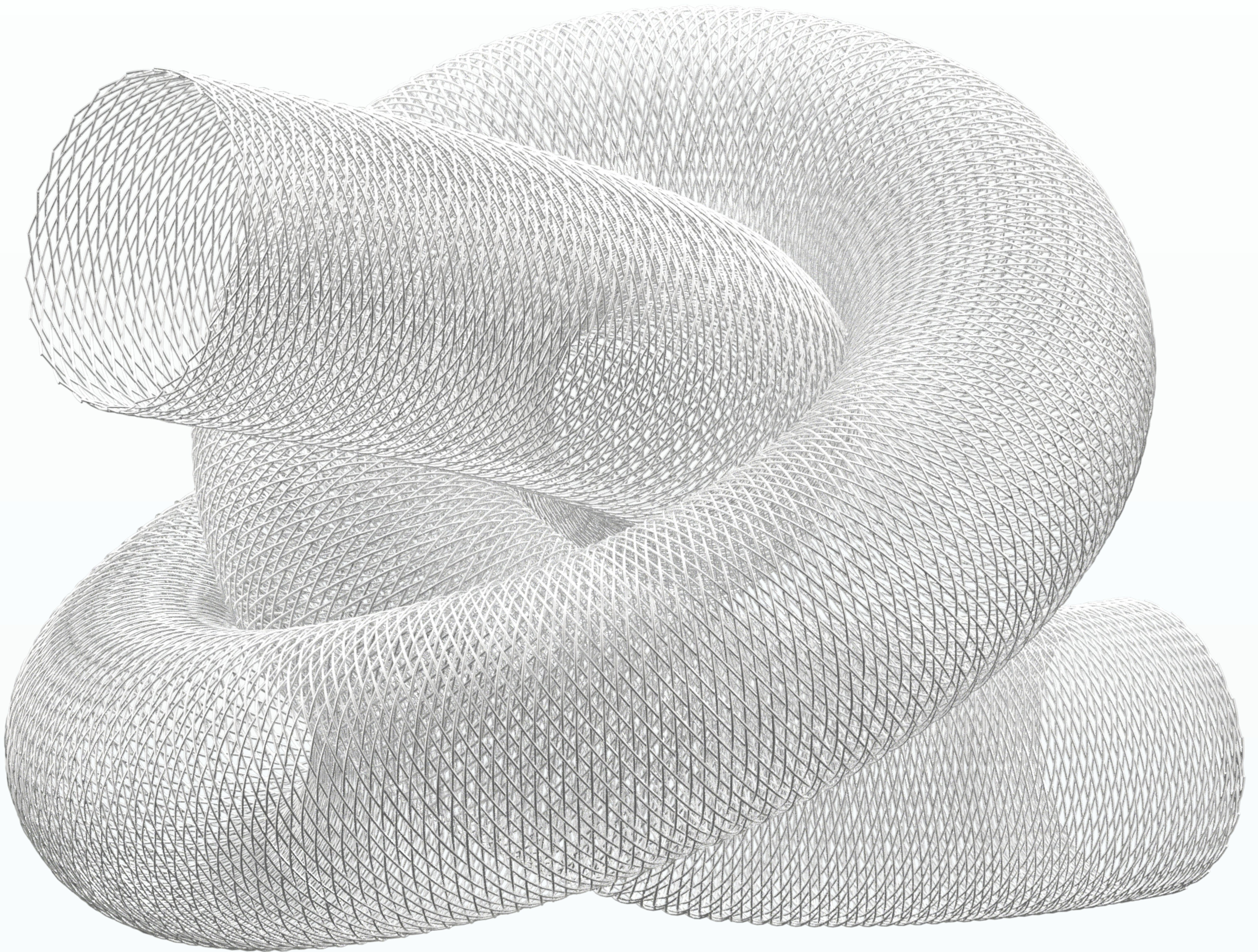
Lattice is loaded on an innovative mechanical balloon delivery system. With the help of the self-expanding mechanical balloons, Lattice implant is easy to expand and open while unsheathing.





# Lattice

Lattice implant is made of cobalt–chromium alloy, featuring strong radial force and wall apposition.



- 
- 36 cobalt–chromium alloy wires + 12 platinum–tungsten alloy wires
  - Mesh density: 20–35/mm<sup>2</sup>

- Metal coverage: 30–40%
- Thickness: 50µm



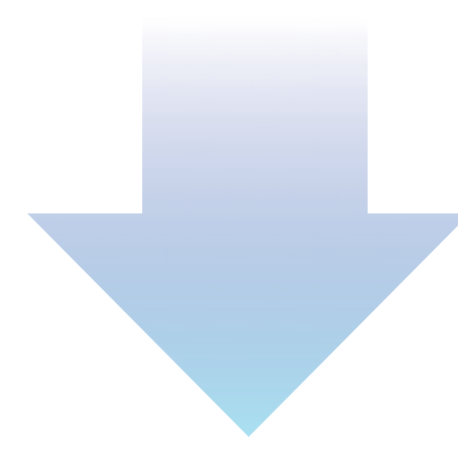
# MIROR

MIROR technology refers to the Metal Interface Reassembly for Optimizing Restenosis.

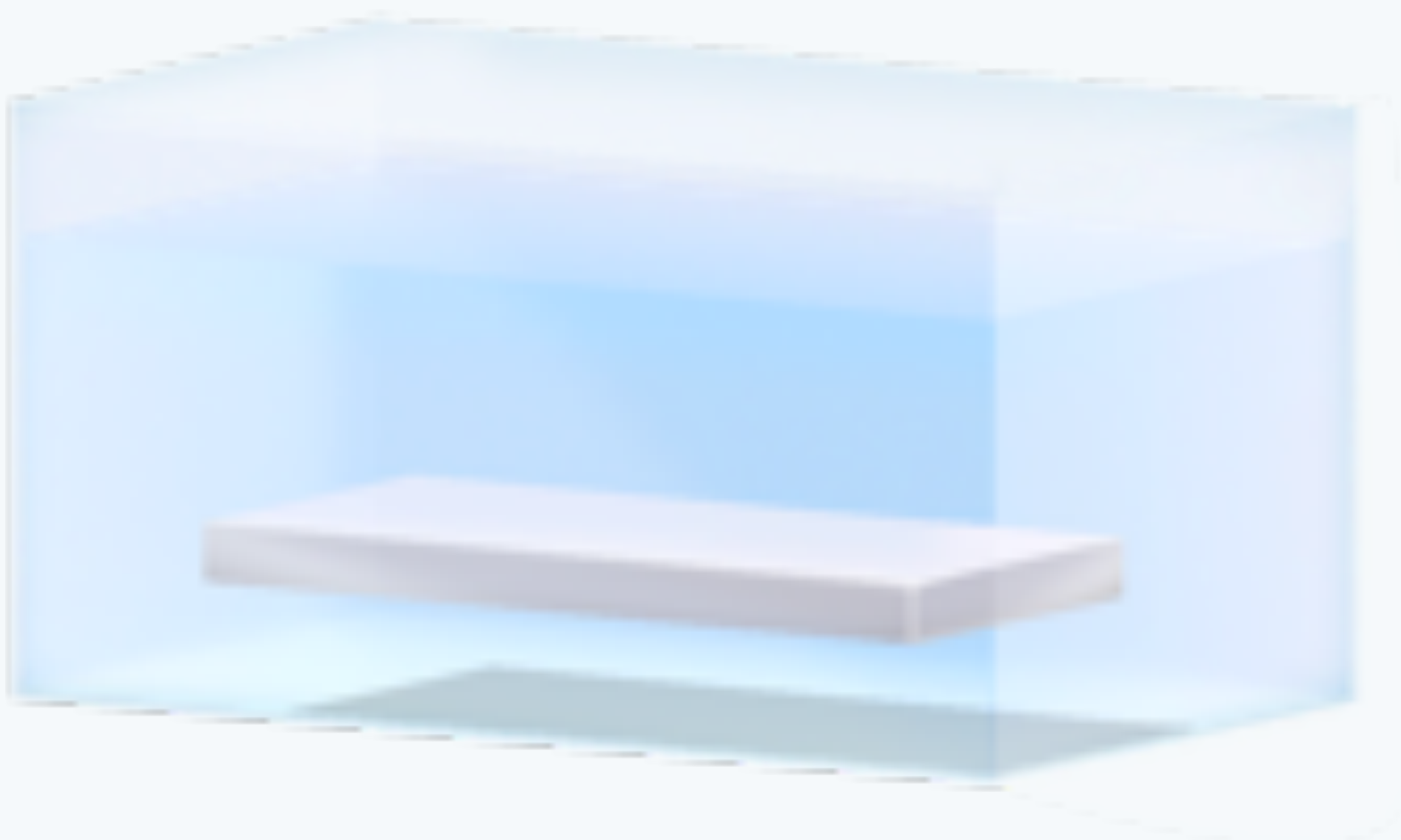
01



The implant and mechanical balloons both adopt MIROR technology, to reduce thrombogenicity and enhance endothelialization.



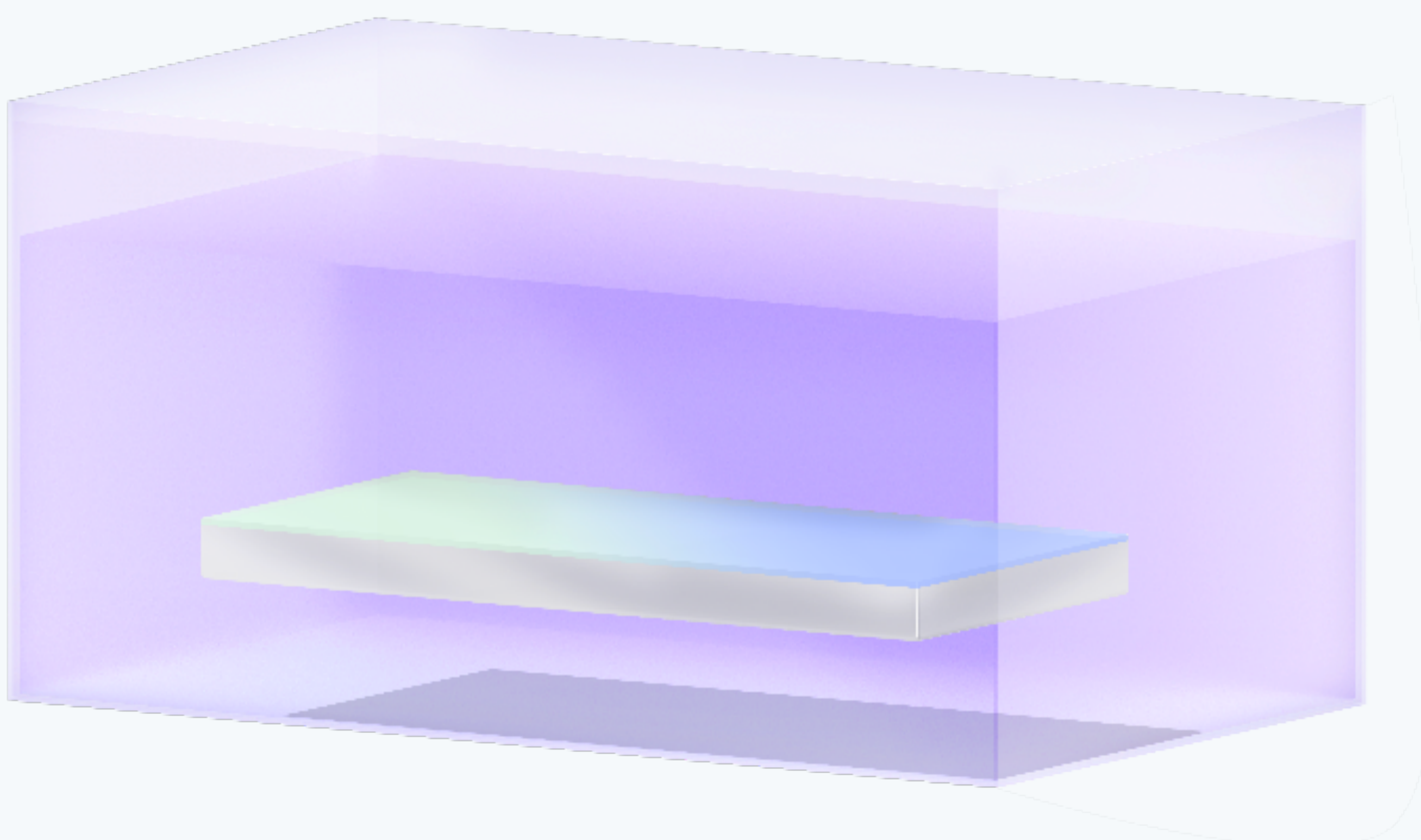
02



- Remove unstable oxide layer
- Weaken thrombocyte agglutination to reduce thrombogenicity
- 0.78% ischemic event occurrence rate in LIFE clinical trial



03



- Around 2 nm self-assembled monolayers enhancing endothelialization
- Reduce endothelium hyperplasia caused by uneven stent surface
- 0.78% stent restenosis occurrence rate in LIFE clinical trial



No.	Product Model	Nominal Diameter (mm)	Nominal Length (mm)	No.	Product Model	Nominal Diameter (mm)	Nominal Length (mm)
1	AF2301FB	2.3	13	45	AF4104FB	4.1	25
2	AF2302FB	2.3	20	46	AF4105FB	4.1	30
3	AF2303FB	2.3	27	47	AF4106FB	4.1	35
4	AF2304FB	2.3	33	48	AF4107FB	4.1	40
5	AF2601FB	2.6	12	49	AF4108FB	4.1	45
6	AF2602FB	2.6	18	50	AF4402FB	4.4	13
7	AF2603FB	2.6	25	51	AF4403FB	4.4	15
8	AF2604FB	2.6	31	52	AF4404FB	4.4	20
9	AF2605FB	2.6	38	53	AF4405FB	4.4	25
10	AF2606FB	2.6	45	54	AF4406FB	4.4	30
11	AF2901FB	2.9	11	55	AF4407FB	4.4	35
12	AF2902FB	2.9	15	56	AF4408FB	4.4	40
13	AF2903FB	2.9	20	57	AF4702FB	4.7	13
14	AF2904FB	2.9	25	58	AF4703FB	4.7	15
15	AF2905FB	2.9	30	59	AF4704FB	4.7	20
16	AF2906FB	2.9	35	60	AF4705FB	4.7	25
17	AF2907FB	2.9	40	61	AF4706FB	4.7	30
18	AF2908FB	2.9	45	62	AF4707FB	4.7	35
19	AF2909FB	2.9	50	63	AF4708FB	4.7	40
20	AF3201FB	3.2	11	64	AF4709FB	4.7	45
21	AF3202FB	3.2	15	65	AF5002FB	5.0	13
22	AF3203FB	3.2	20	66	AF5003FB	5.0	18
23	AF3204FB	3.2	25	67	AF5004FB	5.0	22
24	AF3205FB	3.2	30	68	AF5005FB	5.0	26
25	AF3206FB	3.2	35	69	AF5006FB	5.0	29
26	AF3207FB	3.2	40	70	AF5007FB	5.0	33
27	AF3208FB	3.2	45	71	AF5008FB	5.0	37
28	AF3209FB	3.2	50	72	AF5009FB	5.0	41
29	AF3502FB	3.5	15	73	AF5302FB	5.3	13
30	AF3503FB	3.5	20	74	AF5303FB	5.3	18
31	AF3504FB	3.5	25	75	AF5304FB	5.3	22
32	AF3505FB	3.5	30	76	AF5305FB	5.3	26
33	AF3506FB	3.5	35	77	AF5306FB	5.3	29
34	AF3507FB	3.5	40	78	AF5307FB	5.3	33
35	AF3508FB	3.5	45	79	AF5308FB	5.3	37
36	AF3802FB	3.8	15	80	AF5309FB	5.3	41
37	AF3803FB	3.8	20	81	AF5604FB	5.6	20
38	AF3804FB	3.8	25	82	AF5605FB	5.6	23
39	AF3805FB	3.8	30	83	AF5606FB	5.6	27
40	AF3806FB	3.8	35	84	AF5607FB	5.6	30
41	AF3807FB	3.8	40	85	AF5608FB	5.6	33
42	AF3808FB	3.8	45	86	AF5609FB	5.6	36
43	AF4102FB	4.1	15	87	AF5610FB	5.6	39
44	AF4103FB	4.1	20				



AccuMedical Beijing Inc.  
1210, Building A Pacific Century Place, 2A Gong Ti Bei Lu, Chaoyang  
District, Beijing, CHINA

---



[www.accumedical.com](http://www.accumedical.com)  
+86 010 6506 5018

---